



# Virtual Autism Evaluations for Kids

- ☒ We see kids 16 months-10 years old.
- ☒ Referrals welcome, but not required.
- ☒ See your dedicated Board-Certified Physician every time.
- ☒ We use all telehealth appointments - virtually, from the comfort of home.
- ☒ Appointments are available now.
- ☒ We accept insurance.\*
- ☒ Care Sidekicks are available to connect families with appropriate resources and guide the family along their journey after a diagnosis.\*

*\*We accept insurance, including Medicaid, TRICARE, Aetna, Cigna, CareSource and Blue Cross Blue Shield. Coverage and Care Coordination resources may vary by state and are based on each child's benefits.*



**asyouare.com**

MKT-1376 v1

# How It Works

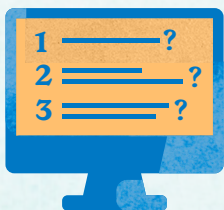


OR

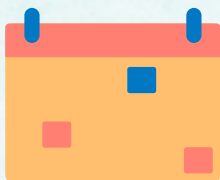


Provider refers a family to As You Are and the family receives an email with instructions on how to get started.

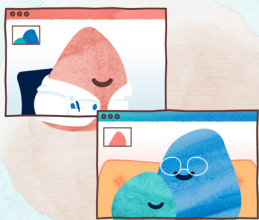
Parent or Guardian visits AsYouAre.com.



Family provides basic information like family history, development and health history using the online questionnaire.



Family schedules the 1st of 3 appointments with their dedicated physician.



During the results (3rd) appointment, physician shares diagnosis with family for appropriate care.



Families receive support to help them navigate accessing appropriate care and resources after receiving a diagnosis.\*

**For additional details, call 866.219.8595 or email support at [Support@AsYouAre.com](mailto:Support@AsYouAre.com)**