



A WellSpan Health Career

Join our team of 20,000
strong working as one.



Healthy Communities, Healthy Careers

At WellSpan Health, we work as one. We invest in all. We trust our physicians and advanced practice providers.

As a mission-driven organization, we are committed to transforming the health of the communities we serve in south central Pennsylvania and northern Maryland — and to educating medicine's next generation of physicians, advanced practice providers and leaders. Our continued commitment to that mission has led to numerous distinctions and recognitions for our hospitals and facilities.

- ★ **150 Top Places to Work in Healthcare** (Becker's Healthcare) for 2022.
- ★ **America's Best Employers by State** (Forbes) in the top 100 of Pennsylvania employers.
- ★ **"A" Hospital Safety Grade** (Leapfrog) for 5 WellSpan Health hospitals.
- ★ **Pathway to Excellence** (American Nurses Credentialing Center) for being one of the best places for nurses to work.
- ★ **Training APEX Award** (Training Magazine) for the quality of our educational and development programs.
- ★ **LGBTQ+ Healthcare Equality Top Performer** (Human Rights Campaign) for exceptional commitment to LGBTQ+-inclusive policies and practices.
- ★ **100/250 Best Hospitals** (Healthgrades) for 3 WellSpan Health hospitals.
- ★ **Best Regional Hospitals and High Performing Hospitals** (US News & World Report) for numerous WellSpan Health hospitals/specialties.

Where there's WellSpan, there's a community that you'll love to call home.

As a nonprofit, we reinvest in our communities to improve the health and wellness of our patients. We also invest heavily in our physicians and providers — supporting them with new and innovative technologies and treatments, and helping them advance their careers through peer learning, mentorship, cross-training, continuing education and tuition reimbursement.

Benefits of practicing at WellSpan include:

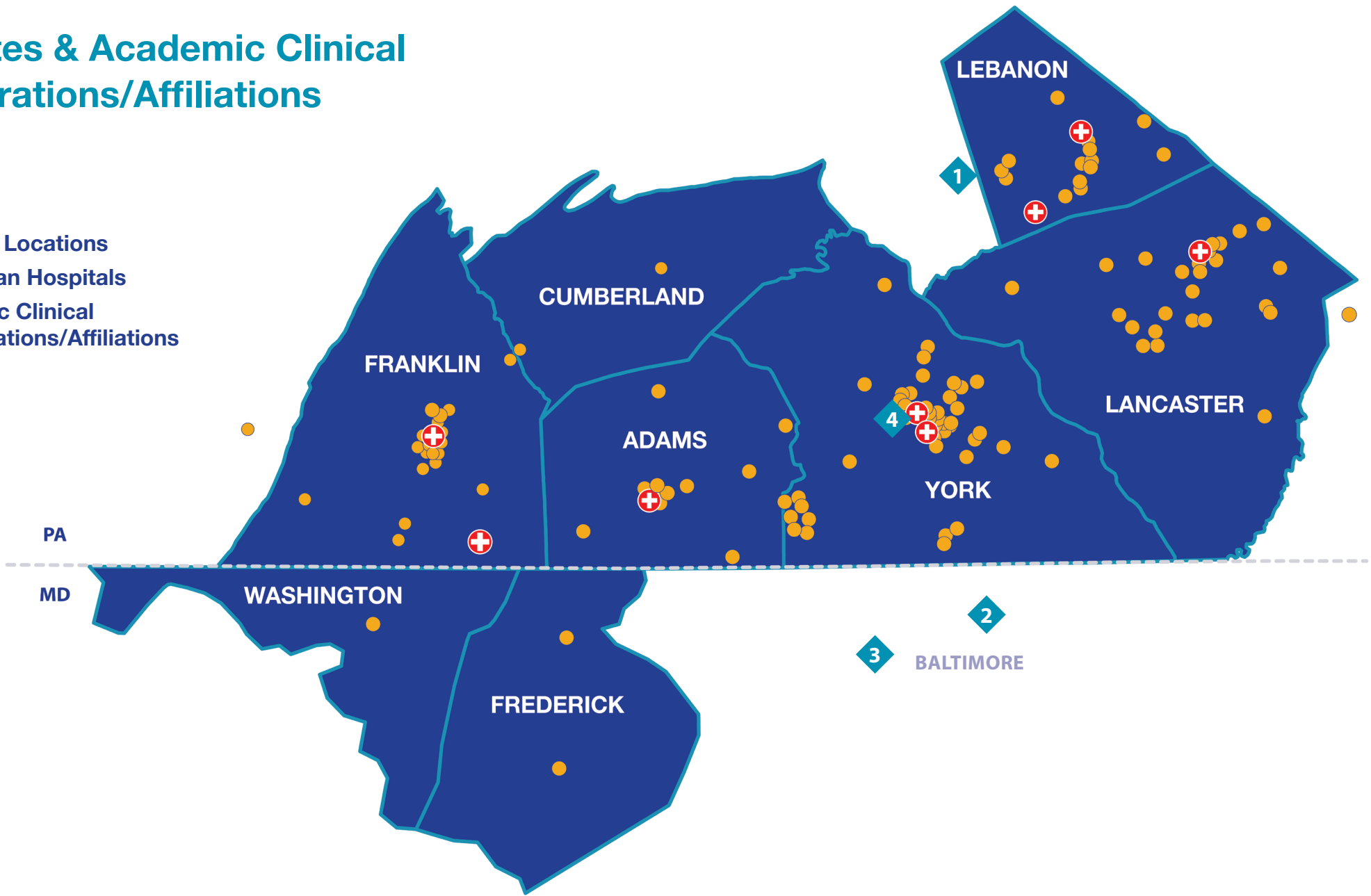
- Work-life integration and well-being programs
- Physician leadership opportunities
- Innovations in telehealth and care delivery models
- Workplace safety and emotional support resources
- Financial strength and stability
- Fully integrated Epic EHR across all hospitals, practices and ambulatory facilities

Below: Roxanna Gapstur, PhD, RN, President and CEO of WellSpan Health (right).



Care Sites & Academic Clinical Collaborations/Affiliations

- 220 Care Locations
- ⊕ 8 WellSpan Hospitals
- ◆ Academic Clinical Collaborations/Affiliations



WellSpan Chambersburg Hospital
Chambersburg, PA

- 285 beds
- Cardiology Catheterization Lab
- Level II NICU
- 2 Hyperbaric Oxygen Therapy Chambers

WellSpan Ephrata Community Hospital
Ephrata, PA

- 130-bed community hospital
- 6,300+ inpatient admissions annually
- Primary Stroke Center

WellSpan Gettysburg Hospital
Gettysburg, PA

- 76-bed community hospital
- 5,000+ inpatient admissions annually
- Primary Stroke Center

WellSpan Good Samaritan Hospital
Lebanon, PA

- 170-bed community hospital
- 7,000+ inpatient admissions annually

WellSpan Philhaven
Mount Gretna, PA

- 130-inpatient bed behavioral health care facility for children, adolescents and adults
- 2,500+ inpatient admissions annually
- Regional network of behavioral health care

WellSpan Surgery & Rehabilitation Hospital
York, PA

- 73-bed hospital with specialized treatment environment for patients recovering from orthopedic, spine and neurosurgery
- 2,000+ inpatient admissions annually
- Brain injury unit
- Inpatient and outpatient rehabilitation

WellSpan Waynesboro Hospital
Waynesboro, PA

- 56 beds
- Comprehensive selection of services
- 175 physicians, 500 staff, 200+ volunteers

WellSpan York Hospital
York, PA

- 596-bed community and nationally accredited teaching hospital
- 33,000+ inpatient admissions annually
- Level 1 Regional Resource Trauma Center
- Regional Comprehensive Stroke Center
- NICU

1 Penn State Health, Milton S. Hershey Medical Center
Clinical program affiliation and planning, pediatric cardiology, OHS support

2 Johns Hopkins Medicine
Clinical program collaboration in oncology, pediatric surgery and plastics/surgery

3 Maryland Proton Treatment Center
Affiliated with University of Maryland Marlene and Stewart Greenbaum Comprehensive Cancer Center

4 Drexel University College of Medicine
Regional Medical Campus – WellSpan York Hospital

WellSpan at a Glance

A valuable community resource that provides over

\$187.9 million



in community benefit annually.

Service Lines

- Behavioral Health
- Diagnostics
- Heart & Vascular
- Medicine
- Neurosciences
- Oncology
- Orthopedics
- Primary Care
- Surgery, Anesthesia & Perioperative
- Women & Children

Programs & Services

- Ancillary
- Diagnostic Imaging
- Durable Medical Equipment
- Family Medicine
- Home Care
- Internal Medicine
- Laboratory
- Pediatrics
- Post Acute
- Rehabilitation
- Retail Pharmacy
- Urgent Care & Online Urgent Care

The Region's Only

accredited Level 1 Trauma Center and Regional Comprehensive Stroke Center supported by a network of Primary Stroke Centers.

Educational Programs through WellSpan Health

Medical Student Education



More than
500
medical students,
residents and fellows
hosted each year



Affiliation with medical programs at area colleges and universities, including:

- Drexel University College of Medicine – Regional Medical Campus – WellSpan York Hospital
- Penn State University College of Medicine
- The Sidney Kimmel Medical College at Thomas Jefferson University
- Philadelphia College of Osteopathic Medicine (PCOM) – WellSpan Good Samaritan Hospital
- West Virginia School of Osteopathic Medicine

Internship Program

- Behavioral Health

Residency Programs

- Dental
- Emergency Medicine
- Family Medicine – WellSpan York Hospital
- Family Medicine – WellSpan Good Samaritan Hospital
- Internal Medicine
- OB/GYN
- Orthopedic Surgery
- Pharmacy
- General Surgery

Fellowship Programs

- Emergency Ultrasound
- Gynecologic Oncology
- Orthopedic Hand Surgery
- Orthopedic Trauma
- Sports Medicine

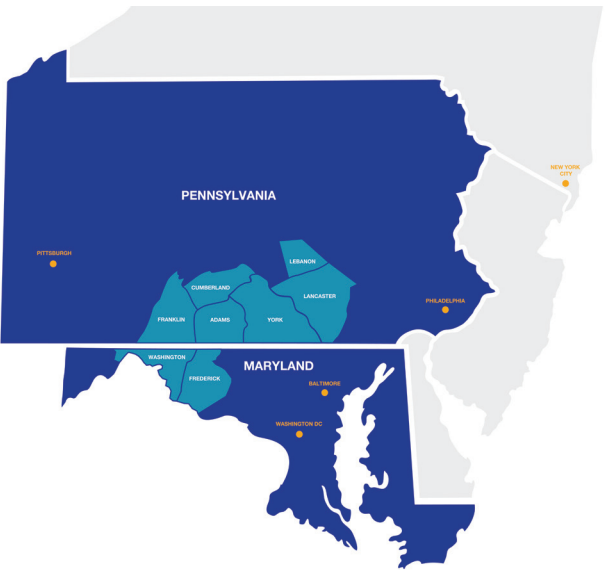
Leadership Academy

- Dozens of physicians and advanced practice providers have completed WellSpan’s leadership development program
- Offers educational and mentoring opportunities to physicians and advanced practice providers with leadership potential

You’ll Feel Right at Home

South central Pennsylvania offers an idyllic blend of small cities and towns including Chambersburg, Ephrata, Gettysburg, Lancaster, Lebanon, Waynesboro and York. Here you’ll find affordable housing prices and living costs. Plus, you’ll enjoy abundant education options—from K-12 to undergraduate and post-graduate levels. Arts, history, entertainment, dining, recreation and shopping venues enrich our communities. Residents and visitors find easy access to air, rail and public transportation.

WellSpan facilities are conveniently situated within a comfortable drive to major cities like Philadelphia, Baltimore and Washington, D.C.



Chambersburg



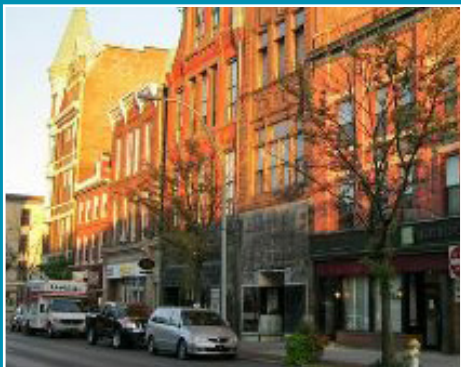
Gettysburg



Lancaster



Lebanon



Waynesboro



York



About WellSpan

WellSpan Health is central Pennsylvania's most comprehensive health system—serving the region with an extensive network of physicians and advanced practice clinicians, leading hospitals, health centers, home care and walk-in care centers conveniently located in our local communities. Our mission is to partner with communities and residents to improve health by providing exceptional care that helps our neighbors not only get better but also stay healthy. Our physicians and caregivers work together to help you achieve optimal health. And with MyWellSpan, it's easier than ever to manage your health online—anytime, anywhere. **At WellSpan, our goal is to help you reach your health goals in life.**

Our Mission

Working as one to improve health through exceptional care for all, lifelong wellness and healthy communities.

Our Vision

A Trusted Partner. Reimagining Healthcare. Inspiring Health.

Our Values

Respect for All. Working as One. Assume Positive Intent. Do the Right Thing. Find a Better Way.

WellSpan Health
3350 Whiteford Rd.
York, PA 17402
(866) 230-1477

joinwellspan.org/Physicians-APPs

