

# Children's Healthcare








With roots extending back to a two-person partnership formed in 1898, Page is one of the most prolific and enduring architecture and engineering design practices. Page architects, engineers, interior designers, planners, strategic analysts and technical specialists provide services throughout the United States and abroad. Our diverse, international portfolio includes projects in the healthcare, academic, government and science and technology sectors, as well as civic, corporate and urban housing projects.

The Page portfolio consists largely of complex projects that benefit from our integrated disciplines and that make a significant impact on the communities they serve. We are guided by the three core values of creativity, collaboration, and commitment, and through the force of these ideals, we live up to our promise of design that makes lives better.

---

 Visit our website at  
[pagethink.com](https://pagethink.com)





# Curating Care: Design that Thinks as Big as You

We focus on curating care with design that thinks as big as you through an inclusive, empathetic, curious, lean, and forward-thinking approach.

## Inclusive

Leading with diverse options, global expertise, local flavor

## Empathetic

Prioritizing a client-first, person-centered design approach

## Curious

Embracing inquiry grounding in research

## Lean

Striving for continuous improvement

## Forward-Thinking

Exploring what's possible





We start with your vision. We design for the future.



Children

We design for children; we design for families. Children’s Healthcare for adults, children, and infants — each with unique needs but served by a single facility. Whether celebrating a new birth, treating a toddler during an emergency, helping a teen through chemotherapy, or providing preventative immunizations, the heart of children’s healthcare is offering the best care — the best experience — for every family and child.

Evidence-based design grounded in an understanding of complex medical conditions and pediatric standards helps us meet the needs of diverse ages and user groups. We think carefully about safety, flexibility, efficiency, and flow while looking for opportunities to share resources and enhance collaboration. Our in-depth understanding of neonatal services delivery and clinical processes helps us plan for sensitive NICU environments and care for new mothers. Our Children’s hospitals are also rich with safe, home-like accommodations, playful family areas, quiet spaces for caregivers, and furniture and finishes for little hands and busy feet.

CORE MARKETS

- Academic
- Aviation
- Civic/Community/Culture
- Corporate/Commercial
- Government
- Healthcare
- Housing/Hospitality
- Industrial
- Science/Technology

Design is the crux of what we do. Throughout the generations, Page has promised, and delivered, design that makes lives better. We believe buildings are important for what they do and for the positive impact they make on individual lives.

That’s why we have a solution-driven project focus that results in life-enhancing buildings and places. Our multidisciplinary services allow complete integration from conceptualization to engineering to interiors and more, resulting in an improved client experience and final product.

We recognize that good talent can be applied to complex projects regardless of industry. And good talent becomes great when it gains experience in a variety of situations. We create crossover teams so that individuals can work on different projects and share their own expertise and insights with other team members. Our collective commitment to visionary design is reflected in our portfolio of successful, complex projects.

Our work spans the globe, from more than 25 U.S. diplomatic campuses to mission critical facilities in the Middle East to five-star resorts in Africa and beyond. Since Page has multiple offices in the US and affiliates abroad, we have the capability to staff projects onsite as well as set up “follow the sun” workflows to increase efficiency.

While Page is distinguished by our portfolio of successes, we also are distinguished by our full spectrum of architectural and engineering design services. This allows us to provide an integrated “total design” single team approach. Our clients benefit from the highest levels of interdisciplinary coordination, quality control and quick response demanded on today’s highly complex and technically sophisticated projects.

SERVICES

- Architecture
- Engineering
- Interiors
- Planning / Urban Design
- Lab Planning / Design
- Branding & Graphics
- Strategy & Analytics
- Building Sciences
- Commissioning

Pediatric Health Leadership



**Kimberly Stanley, AIA**  
Principal  
Children’s Health Director  
kstanley@pagethink.com



**Vanessa Lampe Heimbuch, AIA, LEED AP**  
Children’s Healthcare East Region  
vlampeheimbuch@pagethink.com



**Rhona Voyt, AIA**  
Children’s Healthcare Central Region  
rvoyt@pagethink.com

Healthcare Leadership



**Tushar Gupta, FAIA**  
Principal  
Healthcare Sector Leader  
tgupta@pagethink.com



**Jennifer Conrad, EDAC**  
Director of Business Development, Healthcare  
jconrad@pagethink.com



**Tracy Lemons**  
Market Sector Manager, Healthcare  
tlemons@pagethink.com



**Jennifer Faseler**  
Market Sector Manager, Healthcare  
jfaseler@pagethink.com



# Case Study

## Driscoll Children’s Hospital North Pavilion Expansion and Renovation Corpus Christi, Texas

### PROJECT DETAILS

**Project Size**  
180,000 Square Feet New  
30,000 Square Feet Renovation  
220 Space Garage Addition

**Services Provided**  
Architecture / Interiors / MEP Engineering  
/ Structural Engineering / Graphics &  
Wayfinding

Driscoll Children’s Hospital’s largest campus project since 1984, the new Pavilion, is a 5-storey, 180,000 SF, \$60MM expansion that is sited on their campus in order to create connectivity from their parking garage to all major buildings and services the institution provides.

- North Pavilion**
- 180,000 SF of new construction designed for 3 additional vertical levels
  - 22-Bed Pediatric ICU
  - Outpatient surgery Day Hospital Unit
  - Special Procedures Suite
  - Family Amenities

- Perioperative Services**
- Replace and expand PACU
  - Replace and expand PreOp Holding
  - New Surgery Control Station
  - New surgical storage

- Garage Expansion**
- Increase capacity of existing garage by 220 parking spaces
  - Added 2 passenger elevators attached to garage to simplify and improve wayfinding

- Central Utilities Plant**
- Complete equipment replacement including transformers, chillers, boilers and cooling towers

- Wayfinding & Graphics**
- Comprehensive circulation system with unique experiential graphics

- Furnishings & Accessories**
- Page interior designers selected and procured furnishings and art for each of the components of this project

- Corridor Interior Materials Refurbishment**
- Corridor renovations to facilitate the wayfinding project and reinforce a sense of place between buildings and circulation systems





Case Study

Nemours Children’s Hospital  
Orlando, Florida

PROJECT DETAILS

**Project Size**  
630,000 GSF New Construction  
95 beds  
60-acre site  
LEED Gold certified  
*in association with Perkins + Will*

**Services Provided**  
Architecture / Programming / Planning /  
Interiors / Graphics & Wayfinding

Nemours Children’s Hospital brings a full spectrum of what’s possible in pediatric healthcare to Central Florida. Featuring the area’s only emergency department designed especially for children, the new facility offers patients care with everything from life’s little mishaps to big emergencies and long-term needs.

What can design do to create a unique healing environment and connect with the community? Nemours Children’s Hospital hums with world-class medical technology, state-of-the-art equipment, and a family-focused environment.

Nemours’ family-friendly design houses the ambulatory and acute care spaces for medical specialties in adjacent wings of the same floor with shared waiting spaces. Whether hospitalized or visiting a clinic, children see the same physicians and clinical staff. Familiar faces and continuity of care reassure both patients and parents.

Nemours’ playrooms harness the healing power of play. During their stay, children discover interactive water features, explore the one-acre garden, or catch a performance at the outdoor community stage.

There’s also a teaching kitchen. Here, children take the lead in learning how to cook healthy and simple recipes. The space is an educational resource for the community, supporting events like the American Heart Association’s Heart Health Day.

And the rest of the family? After gathering in family lounges, they’ll find private patient rooms designed with home-like overnight accommodations for two. There are laundry facilities and concierge stations.

As good neighbors, Nemours Children’s Hospital is also one of three Florida children’s hospitals to achieve LEED Gold certification. Its sustainable environment is based on green design and construction features that positively impact the broader community.

Offering the best possible care, featuring sustainable design, and harnessing the power of play — can you imagine the healing that happens at Nemours?



Top: Phase I  
Bottom: Phase III

Relevance: Flexible future growth opportunities for inpatient and outpatient care areas, multi-phase comprehensive master plan

- |    |                             |    |                          |
|----|-----------------------------|----|--------------------------|
| A: | Inpatient Hospital Phase I  | H: | Education/Conference     |
| B: | Inpatient Hospital Phase II | I: | Emergency                |
| C: | Outpatient Clinic Phase I   | J: | Medical Office Building  |
| D: | Outpatient Clinic Phase II  | K: | Research                 |
| E: | 600 Car Parking Deck        | L: | Child Development Center |
| F: | Central Energy Plant        |    |                          |
| G: | Ronald McDonald House       |    |                          |





Case Study

Texas Children’s Hospital West Campus  
Houston, Texas

PROJECT DETAILS

**Project Size**  
514,000 Square Feet

**Services Provided**

Master Planning / Planning /  
Programming /Architecture / Design  
Services / MEP Engineering / Contract  
Administration

Designed and constructed concurrently, Texas Children’s West Campus and Methodist West Houston Hospital serve as anchors for the new medical complex known as the “Texas Medical Center West.” Combined, the two Page-designed facilities will ultimately provide 1,200,000 square feet of new medical space for this large and growing community.

Located on a 55-acre site, the new Texas Children’s West Campus is the first community children’s hospital to be built in the greater Houston area and is one of the largest suburban pediatric hospitals in the nation. The initial phase of construction includes a 294,000-square-foot hospital with 48-inpatient beds, along with a 220,000-square-foot ambulatory care and medical office building and a central utility plant. Other patient care spaces include operating suites and an emergency department. The architectural vocabulary of the existing main campus of Texas Children’s Hospital has been reinterpreted at their new suburban setting. The new facility incorporates interior and exterior evidence-based design elements that promote healing such as natural light, views of water and nature, child life play areas, and outdoor park-like settings for patient and family use.

**PICU**

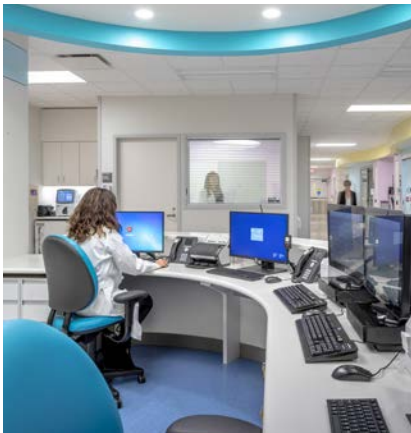
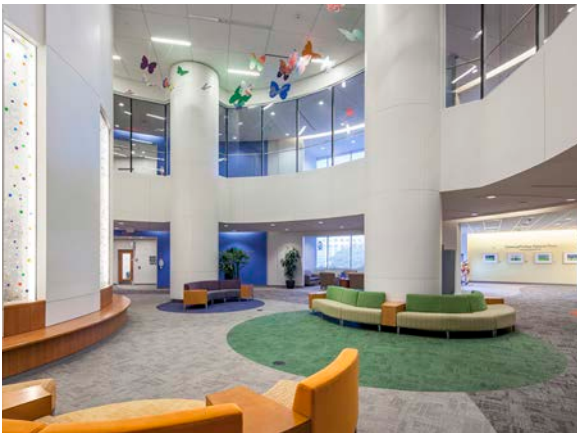
The hospital’s fourth floor shell space was designed by Page as a Pediatric Intensive Care Unit (PICU) with 22-private inpatient rooms. One of the key project goals was to improve patient safety. The PICU features many thoughtful accommodations for family members, as well as clear visibility from the nurse substations to the patients, and state-of-the-art technology and support spaces throughout.

**Special Isolation Unit**

Texas Children’s Hospital was chosen by the Centers for Disease Control and Prevention (CDC) to be the first pediatric Ebola Treatment Center in Texas. This eight-bed unit is the largest pediatric Ebola Treatment Center in the U.S. The unit was specifically designed to be flexible enough to accommodate acute care patients, isolation patients (such as influenza or tuberculosis) and special isolation patients with highly contagious infectious diseases (such as Ebola, pandemic influenza, SARS, MERS and many others).

**OR Expansion and Renovation**

The West Campus OR Expansion and Renovation occurred over two phases in existing occupied space and adjacent shell space.





Case Study

Children’s Healthcare of Atlanta  
Arthur M. Blank Children’s Hospital  
Atlanta, Georgia

PROJECT DETAILS

**Project Size**  
1.4 million SF  
446-Bed  
Medical Office Building  
Support Building  
Parking  
*in association with ESa Architects*

**Services Provided**  
Architecture / Programming / Planning /  
Interiors / Furniture Planning / Graphics /  
Parking

Following the system’s health and wellness philosophy, the campus Masterplan is focused on preserving land and optimizing views of nature and the surrounding area. Beginning with the arrival sequence and preserving land for exterior gardens, Children’s Healthcare of Atlanta has placed a priority on a design solution that creates both a healing environment and a healthy workplace. Organization of the site, building orientation, access and wayfinding further support these principles. This project, planned to see new patients in 2025, includes the new 20-story, 446-bed North Druid Hills Hospital, an attached 12-story medical office building and dedicated Central Utility Plant.





Case Study

Children’s Health Specialty Center II  
Andrews Institute for Orthopaedics and Sports  
Medicine

Children’s Legacy Hospital  
Plano, Texas

PROJECT DETAILS

**Project Size**  
Specialty Center II / Andrews Institute for  
Orthopaedics and Sports Medicine  
204,000 Square Feet

Children’s Legacy Hospital  
325,834 Square Feet

**Services Provided**  
Architecture / Programming / Planning /  
Interiors / Furniture Planning

**Specialty Center II / Andrews Institute for Orthopedic and Sports Medicine**  
More than 2.5 million children are treated each year for sport-related injuries. In response to this increasingly growing number, Dr. Andrews, co-founder of the Andrews Sports Medicine and Orthopaedic Center, collaborated with Children’s Health to create a premier pediatric Orthopaedics, Sports Medicine Health and Wellness Complex that aims to greatly reduce the number of children’s injuries and provide educational programs for wellness and injury prevention.

The four-story Specialty Center II is located on the Plano Health Campus and includes an embedded Ambulatory Surgical Center with four (future for eight) operating rooms. The Andrew’s Institute occupies the first two levels of the building. In addition to the Ambulatory Surgical Center, outpatient services offered at the facility include athletic performance training, physical therapy, outpatient imaging, and pediatric orthopaedics and sports medicine clinics. Patients have access to a continuum of care beginning with wellness training and nutrition counseling to surgery, rehabilitation and therapy. The outdoor athletic performance training field has an observation platform for family viewing and performance evaluation.

**Children’s Medical Center at Legacy**  
Maximizing the healing power of nature to create a curative environment influenced by the latest concepts of patient-centered care provided the design basis for this 301,770-square-foot pediatric specialty hospital. From every public space to every patient room, the design team considered how patient care and safety could be improved through the use of nature, daylight and color, while positively affecting the experiences of patients, families and staff.

The 81-acre site was master planned for the initial 72-bed facility with associated outpatient clinics and can expand to accommodate 240 beds with more than 500,000 square feet of clinic and office space. Using a master palette offered a way to differentiate each unique area while developing a commonality among them. The Page design team, which included Zimmer Gunsul Frasca (ZGF) as Associate Architect, has developed a high-tech/high-touch facility to meet the needs of children, families and caregivers alike.





Case Study

Arnold Palmer Hospital for Children Expansion

Winnie Palmer Hospital for Women and Babies  
Level II NICU  
Orlando, Florida

PROJECT DETAILS

**Project Size**  
Arnold Palmer Hospital Expansion  
101,000 Square Feet (Expansion)  
79,000 Square Feet (Renovation)

Winnie Palmer Hospital NICU Expansion  
20,000 Square Feet (Infill)

Services Provided

Architecture / Engineering / Interiors /  
Consulting / Commissioning / Planning /  
Programming / Sustainability

Arnold Palmer Hospital for Women and Children Expansion

The Arnold Palmer Hospital for Women and Children Expansion and Renovation project reflected a need for increased capacity, based on the growing demand from the Orlando and Orange County area. Page was engaged in late 2002 to design the expansion and renovation of the newly named Arnold Palmer Hospital for Children. The project required establishing inter-connectivity to the existing adjacent buildings while maintain operations as a pediatric trauma center during construction.

The task of adding a 101,000-square-foot expansion along with renovating approximately 79,000 square feet of existing facilities was extremely challenging and was accomplished in eight phases of construction. Numerous departments were renovated including the Pediatric Emergency Department, Imaging, Inpatient and Outpatient Surgery (12 OR's), Pre-Op and PACU and the ICU.

Winnie Palmer Hospital for Women and Babies

Several years later, when the existing 112-bed NICU at Winnie Palmer Hospital required expansion, the design team at Page was brought in to create a new Level II NICU on an existing 20,000-square-foot shell floor.

The new unit includes 30 private patient rooms, each with a shower, bathroom and sleeping area for families to stay. Each patient room is designed to enable one or both parents to stay with their child 24-hours a day in a comfortable and family-friendly environment. Several rooms are large enough to be reconfigured into suites for multiples, while others can accommodate both a post-partum mother and baby for palliative care needs. A bedside glider and privacy curtain allow parents to spend quality time with their infants through kangaroo (skin-to-skin) care.

Staff members are close by, located at workstations outside each patient room. A visitor's lounge, waiting area and seating alcoves are provided to give family members a place of respite without leaving the unit. The warm, rich interior provides a comforting environment that caters to people of all ages and provides a unique, family-centric care environment, where staff and families can work together to nurture the tiniest of patients and help them grow and flourish.





Case Study

LCMC Health  
Children’s Hospital New Orleans  
New Orleans, Louisiana

PROJECT DETAILS

**Project Size**  
238 Beds  
34 Distinct Phases  
7-Year Modernization/Construction  
Project without Disrupting Everyday  
Operations  
400,000 SF Expansion and Modernization

**Services Provided**  
Master Planning / Programming,  
Architecture / Interior Design /  
Environmental Graphic Design / Furniture  
Selection



After a decade in the making, the Children’s Hospital New Orleans partnered with Page to help realize a vision of transforming the state’s go-to children’s facility into a fully modernized comprehensive pediatric health campus. This phased renovation and addition will increase the hospital’s footprint by over 235,000 square feet.

So, how do you modernize Louisiana’s largest freestanding pediatric hospital while maintaining its critical operations? With lots of creativity and coordination.

Like a well-played chess match, Page developed a clear and rigorous 34-phase plan to keep the Children’s Hospital New Orleans in continuous operation. The approach required innovative scheduling, a heightened focus on safety, progressive wayfinding, and extensive communication with the hospital, contractor, and community.

As you drive through the local neighborhoods and New Orleans’s historic district, you’re greeted by CHNOLA’s newly renovated front entrance. After parking and crossing the glass-enclosed sky bridge, families can enjoy the two-story Lauricella Pavilion. CHNOLA’s new “living room,” the Pavilion is designed to welcome patients by offering interactive game stations and even noise-reducing acoustics to comfort those with special needs. The two-story lobby has become a family room for the community. The colorful lights, digital signage, artwork, and activities energize the staff, patients, families, and city. Reducing anxiety and encouraging creativity, the Pavilion sets the stage for young patients’ healing and well-being.





Case Study

Houston Methodist West Hospital  
Childbirth Center  
Houston, Texas

PROJECT DETAILS

Project Size  
66,000 Square Feet

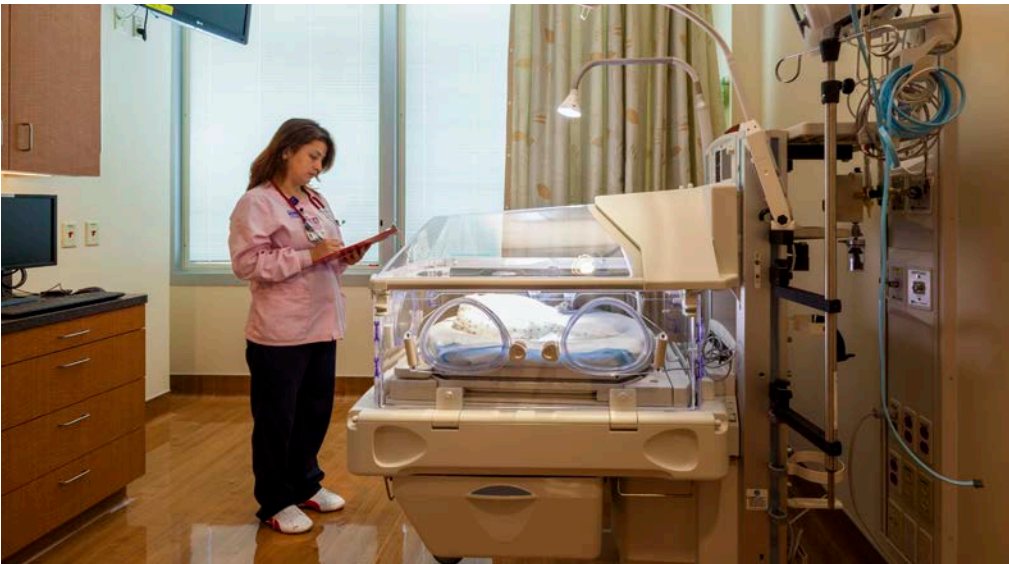
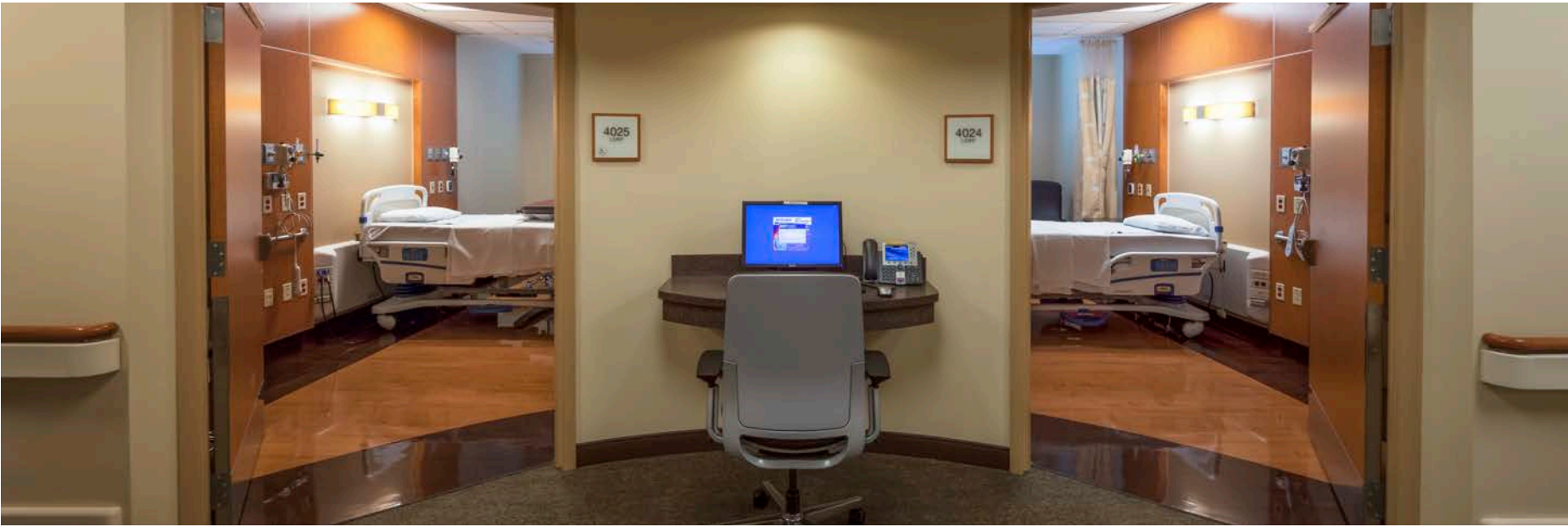
Services Provided

Architecture / Programming / Interiors /  
Planning

When Page began planning the Houston Methodist West Hospital Childbirth Center for the new hospital, the operational model for the department had not yet been determined. To support the client’s strategy of starting small while remaining flexible, the Page team relied on their knowledge and proven processes to provide the best solutions to help the Childbirth Center respond to future, unknown needs and accommodate various operational models.

The first phase included 18 Labor, Delivery, Recovery and Post-partum (LDRP) beds and eight dedicated post-partum beds – a model which allowed maximum flexibility to use the LDRP rooms as LDR or post-partum. The first phase of the Childbirth Center also included a 16-station well baby nursery and 14 private Neonatal Critical Care or Continuing Care (NICU) rooms. Two sets of the NICU rooms include a movable partition between the rooms to provide an opportunity to convert the rooms to a larger space for twin babies, and for parents to share space in the private room setting.

The Phase II expansion of the Childbirth Center provides a total of 28 post-partum beds and 19 NICU beds, allowing the existing 18 LDRP rooms to convert to LDR rooms and functionally separating the LDR unit from the new post-partum unit.





Case Study

Intermountain Healthcare  
Primary Children’s Hospital  
Lehi, Utah

PROJECT DETAILS

**Project Size**  
483,000 Square Feet  
66 Beds and Trauma Center  
Medical Office Building

**Services Provided**  
Architecture / Programming / Interiors /  
Planning / Graphic Design

The new Hospital at Intermountain’s Lehi Campus is a bold expansion of the Intermountain network of care in a fast-growing region of the country. The design process employed Intermountain’s lean methodology and advanced the organization’s construction and brand standards. The active engagement of physicians, caregivers and patients ensures an environment that is not only functional and efficient, but one that supports children and their families throughout their healthcare visit.

The new hospital includes family and child amenities, diagnostic services, pediatric emergency care, inpatient units, pediatric intensive care, neonatal intensive care and behavioral health. The campus also includes a three-story ambulatory care center housing a range of pediatric specialties. Situated on 38 acres adjacent to a residential neighborhood, the site and building design puts a priority on community-based care and includes attributes that focus on patient and staff wellness.





Case Study

Christus Health  
The Children’s Hospital of San Antonio  
San Antonio, Texas

PROJECT DETAILS

**Project Size**  
400,000 Square Feet Modernization  
10,000 Square Feet New Construction  
195 Beds

**Services Provided**  
Architecture / Programming / Planning /  
Interiors / Graphic Design

Transformational design reinvents an adult and pediatric facility as a family-friendly children’s hospital – the first in the region dedicated solely to pediatric care. From neonatal intensive care to state-of-the-art cancer treatments, Children’s Hospital of San Antonio provides innovative care specifically designed to meet children’s needs.

A guardian angel for the community, Children’s Hospital of San Antonio’s exterior showcases Jesse Trevino’s historic mural, “The Spirit of Healing,” where an angel watches over a child and signals your arrival. The mural and playful exterior, re-clad in multicolored ceramic tile, work together with inviting landscapes that incorporate prayer and kitchen gardens to breathe new life into the renovated hospital.

In harmony with the mural, the “Spirit of the River” feature wall is reminiscent of San Antonio’s River Walk, setting a tranquil mood and guiding visitors to a bright new lobby with gathering spaces surrounding a whirlpool-inspired chapel. Color-changing LEDs slowly drift from greens, blues, and purples, creating a “living, breathing river” that not only acts as wayfinding but celebrates CHRISTUS’ missionary legacy.

Playful displays entertain children on their way to the Child Life Center, which features classrooms, teen lounges, and teaching kitchens. Here, kids might catch a ride in little red wagons to outpatient clinic appointments or snuggle up in reading nooks.

“On-stage” and “off-stage” circulation separates clinical care and public spaces to enhance security and operational efficiencies, reduce noise, and provide staff amenities. Every element works together to support Children’s Hospital’s values of dignity, integrity, excellence, compassion, and stewardship.





# Case Study

## St. Jude Children’s Research Hospital Kay Research and Care Center Memphis, Tennessee

### PROJECT DETAILS

**Project Size**  
90,000 Square Feet  
3 Floor

**Services Provided**  
Architecture / Programming / Planning /  
Interiors / Graphic Design

St. Jude treats the toughest childhood cancers and pediatric diseases, so we created an immersive and experiential design to spark children’s imagination, distracting them from the stress of their lengthy hospital stays by inspiring and supporting play.

Each of the three renovated floors houses 17 family suites with home-like rooms for parents and patients. Play and imagination abound through the Interactive shadow boxes and “Discovery Walls” that line the corridors. Each features nine flat-panel LCD displays programmed for gestural interactive play. And every floor uses environmental graphics, custom interactive games, and interior design elements to offer a unique experience – Nature’s Orchestra, Discover the Sea, and Explore Space. Will your child go on safari, swim in the ocean, or blast off to the moon?

But the adventure doesn’t stop there. The design reimagines the 50-foot-long corridors leading from elevators to treatment areas as interactive “Journey Walls” with LED curtains and immersive audiovisual systems.

And there are spaces for all ages. You’ll discover young kids getting creative in playrooms, pre-teens watching movies, and teenagers chatting in conversation areas.

This high-tech, interactive environment caters to children and teenagers of the modern age and makes imagination and play integral parts of the healing process.





Additional Children’s Experience



Baylor Scott & White Medical Center Lakeway / Austin, Texas



Houston Methodist The Woodlands Hospital Childbirth Center / The Woodlands, Texas



Baylor Scott & White All Saints Medical Center Andrews Women’s Hospital / Fort Worth, Texas



Baylor Scott & White All Saints Medical Center Andrews Women’s Hospital / Fort Worth, Texas



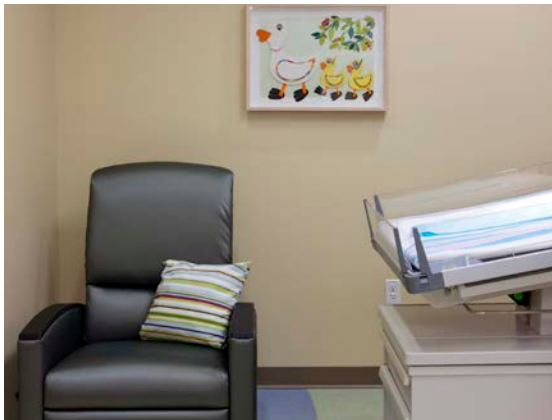
Driscoll Children’s Hospital Emergency Department Expansion and Renovation Project / Corpus Christi, Texas



Baylor Scott & White Our Children’s House / Dallas, Texas



Houston Methodist San Jacinto Pediatric and Neonatal Intensive Care Unit / Baytown, Texas



Norman Regional Hospital / Norman, Oklahoma



Orlando Health Arnold Palmer Children’s Hospital / Orlando, Florida



Saint Francis Health System - Yale Campus NICU / Tulsa, Oklahoma



Driscoll Children’s Specialty Clinic / Brownsville, Texas



Driscoll Children’s Specialty Clinic / McAllen, Texas



Additional Children’s Experience



University of Louisville Novak Center  
Children's Medical Office Building /  
Louisville, Kentucky



Baptist Health  
J. Wayne & Delores Barr Weaver Tower at Wolfson  
Children's Hospital / Jacksonville, Florida



University of Chicago Comer Children's Hospital /  
Chicago, Illinois



Advocate Health NICU Renovations /  
Chicago, Illinois



University Hospitals of Cleveland  
Angie Fowler Adolescent & Young Adult Cancer  
Institute / Cleveland, Ohio



Joe DiMaggio Children's Hospital /  
Hollywood, Florida



Children's Medical Center Emergency / Dallas, Texas



OSF Children's Hospital / Peoria, Illinois



Palmetto Children's Hospital  
Palmetto Health Richland Hospital / Columbia, South  
Carolina



Children's Healthcare of Atlanta  
Center for Advanced Pediatrics / Atlanta, Georgia



The University of Virginia Hospitals  
Battle Building Women and Children's Outpatient  
Center / Charlottesville, Virginia



Wake Forest University Brenner Children's Hospital /  
Winston-Salem, North Carolina





# Page

# Select Children’s Health

# Clients

**Arnold Palmer Hospital for Children**  
Orlando, Florida

**Baylor All Saints Medical Center**  
Fort Worth, Texas

**Baylor Medical Center at Irving**  
Irving, Texas

**Baylor Regional Medical Center at Plano**  
Plano, Texas

**Children’s Medical Center of Dallas – Legacy Campus**  
Plano, Texas

**Chris Evert Children’s Hospital at Broward County**  
Ft. Lauderdale, Florida

**Christus Spohn Healthcare System**  
Corpus Christi, Texas

**Dalian China Pediatric Hospital**  
Dalian, China

**Driscoll Children’s Hospital**  
Corpus Christi, Texas

**Kelsey Seybold Pediatric Clinic**  
Houston, Texas

**Medical City Dallas**  
Dallas, Texas

**Houston Methodist Hospital**  
Houston, Texas

**Norman Regional Hospital**  
Norman, Oklahoma

**Orlando Regional Hospital System**  
Orlando, Florida

**Our Children’s House at Baylor Scott & White Memorial Hospital**  
Dallas, Texas

**Phoebe Putney Memorial Hospital Womens, Infants & Children**  
Albany, Georgia

**Seton Healthcare Network**  
Austin, Texas

**Saint Francis Health System**  
Tulsa, Oklahoma

**Texas Children’s Hospital – West Campus**  
Houston, Texas

**Texas Children’s Hospital – Austin**  
Austin, Texas

**Valley Baptist Medical Center**  
Harlingen, Texas

**Winnie Palmer Women’s Hospital NICU**  
Orlando, Florida

**Chickasaw Nation Medical Center**  
Ada, Oklahoma

**Orlando Health Winnie Palmer Hospital for Women & Babies**  
Orlando, Florida

**Baylor Scott & White All Saints Medical Center**  
Fort Worth, Texas

**Andrews Women’s Hospital**  
Fort Worth, Texas

**Baylor Scott & White Medical Center - Lakeway**  
Lakeway, Texas

**Baylor Scott & White Medical Center - Irving**  
Irving, Texas

**Baylor Scott & White Medical Center - Temple**  
Temple, Texas

**Christus Sphon Health System - South Hospital**  
Corpus Christi, Texas

**Houston Methodist - West Campus**  
Houston, Texas

**Houston Methodist - The Woodlands**  
The Woodlands, Texas

**Houston Methodist - San Jacinto**  
Baytown, Texas

**Nacogdoches Memorial Hospital**  
Nacogdoches, Texas

**Norman Regional Hospital**  
Norma, Oklahoma

**Peebles Hospital**  
Road Town Tortola, Britih Virgin Islands

**Saint Francis Health System - South Campus**  
Tulsa, Oklahoma

**Saint Francis Health System - Yale Campus**  
Tulsa, Oklahoma

**St. Luke’s Health System - Sugarland Campus**  
Sugar Land, Texas

**St. Luke’s Health System - Clearlake Campus**  
Webster, Texas

**Nemours Children’s Hospital**  
Orlando, Florida

**Advocate Christ Medical Center**  
Chicago, Illinois

**Augusta University, Children’s Hospital of Georgia**  
Augusta, Georgia

**Baptist Medical Center Wolfson Children’s Hospital**  
Jacksonville, Florida

**Children’s Healthcare of Atlanta - Scottish Rite**  
Atlanta, Georgia

**Children’s Healthcare of Atlanta - Egleston**  
Atlanta, Georgia

**Children’s Healthcare of Atlanta - North Druid Hills**  
Atlanta, Georgia

**Children’s Hospital New Orleans**  
New Orleans, Louisiana

**Children’s Hospital of San Antonio**  
San Antonio, Texas

**Children’s Medical Center of Dallas**  
Dallas, Texas

**Hasbro Children’s Hospital**  
Providence, Rhode Island

**Intermountain Healthcare**  
Lehi, Utah

**Joe DiMaggio Children’s Hospital**  
Hollywood, Florida

**Kennedy Krieger Institute**  
Baltimore, Maryland

**Medical University of South Carolina Pediatric Emergency**  
Charleston, South Carolina

**Mission Hospitals Reuter Children’s Outpatient Center**  
Asheville, North Carolina

**OSF/Children’s Hospital of Illinois**  
Peoria, Illinois

**Palmetto Health Children’s Hospital**  
Columbia, South Carolina

**Shawnee Mission Health B. E. Smith Children’s Pavilion**  
Shawnee, Kansas

**St. Jude Children’s Research Hospital**  
Memphis, Tennessee

**The University of Iowa Children’s Hospital**  
Iowa City, Iowa

**University of Chicago Comer Children’s Hospital**  
Chicago, Illinois

**University of Louisville Novak Center**  
Louisville, Kentucky

**University of Virginia Battle Building Outpatient Center**  
Charlottesville, Virginia

**University of Virginia Hospitals Children’s Master Plan**  
Charlottesville, Virginia

**Wake Forest University Brenner Children’s Hospital**  
Winston-Salem, North Carolina



Albany  
Albuquerque  
Atlanta  
Austin  
Boston  
Charleston  
Dallas  
Denver  
Dubai  
Houston  
Los Angeles  
Mexico City  
Orlando  
Phoenix  
Raleigh  
Richmond  
San Francisco  
Tampa  
Washington DC  
[pagethink.com](http://pagethink.com)